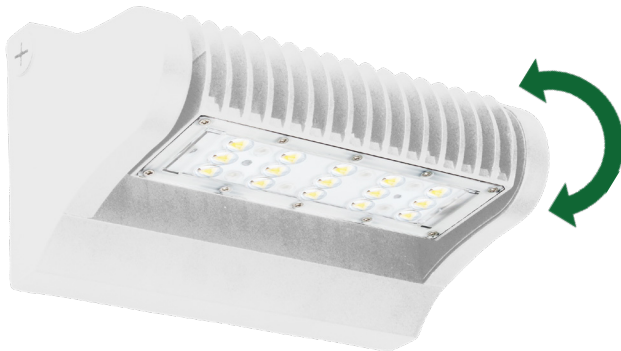


# LW360 SERIES Outdoor Lighting

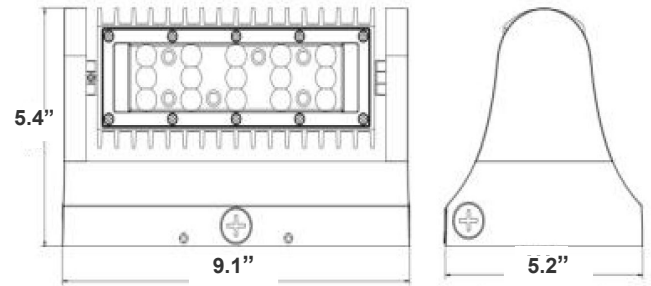
LW360-25W-30K-WH  
LW360-25W-50K-WH

**WESTGATE**  
THE FUTURE IS HERE...AND IT'S QUITE BRIGHT!

Customer Name: \_\_\_\_\_  
Project Name: \_\_\_\_\_  
Note: \_\_\_\_\_ | Type: \_\_\_\_\_



Selection:



5.4"(H) x 5.2"(W) x 9.1"(L)

Ideal for general site lighting, alleys, loading docks, doorway, pathway, and parking areas.

## Features

- Three 1/2" Threaded Knockouts: 1 Bottom. 1 On Each Side
- TIR Optic Lens - TYPE II
- Die-Cast Aluminum Housing With Powder Coat Finish
- 7-Year Warranty

## Technical Specifications

### Electrical:

- Voltage: 120-277VAC 60Hz
- Wattage: 25W
- Power Factor: >0.95
- Efficacy: 135 LPW

### Mechanical:

- Die-Cast Aluminum With Powder Coat White Finish
- TIR Optic Lens - TYPE II
- Includes Mounting Hardware
- Operating Temperature: -40°F -104°F
- Three 1/2" Threaded Knockouts: 1 Bottom. 1 On Each Side
- 7-Year Warranty
- IP65, Suitable for Wet Locations
- Light Head rotates 350°

### Lighting:

- Chip: Philips Lumileds LEDs
- TIR Optic Lens - TYPE II
- Total Lumens: 3375LM
- Color Temperatures: 3000K/ 5000K
- Color Rendering Index: CRI ≥ 80
- Beam Angle: 60°
- Rated life: 70,000 Hrs

### Applications:

- General site Lighting
- Alleys
- Loading docks
- Doorways
- Pathways
- Parking areas

### Other Models:

- 40W | 5400LM | LW360-40W-30K-WH
- 40W | 5400LM | LW360-40W-50K-WH

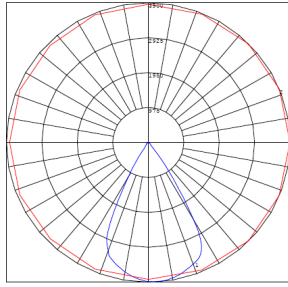
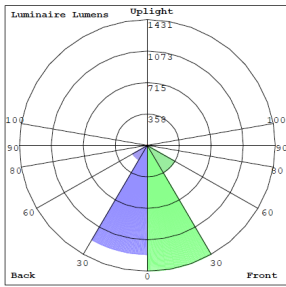


Phone: (877) 805-2252 | Fax: (877) 805-2252  
www.westgatemfg.com | www.westgatecontrols.co

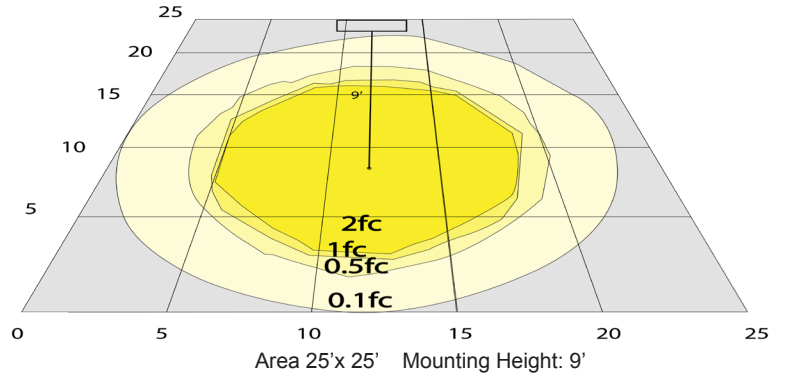


WG-Z9-Z9-ZZ

## Photometrics: LW360-25W-WH



BUG Rating: B3-U1-G0



Area 25'x 25' Mounting Height: 9'

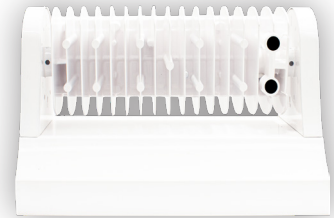
## Other Views:



Side View



Front View



Back View

## Performance Table: LW360-25W-WH

MODEL NO.	Wattage	Voltage	Lumens	Color Temp.	BUG Rating	LPW
LW360-25W-30K-WH	25W	120~277V	3375LM	3000K	B3-U1-G0	135
LW360-25W-50K-WH	25W	120~277V	3375LM	5000K	B3-U1-G0	135

## Sample Ordering

Model Wattage Color Temp. Housing

LW360 - 25W -  - WH

3000K  
5000K

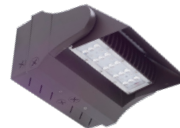
## Accessory:

Blank = No Option For Accessories  
LW360-SH1= SHROUD FOR LW360 SERIES, BRONZE FINISH (CAN BE PAINTED IN WHITE)

## Factory-Installed Options:

Blank = No Option For Accessories  
OPT-EM-LW360= EMERGENCY BACKUP BATTERY, BACK BOX  
OPT-SEN-LW360-3MRLV-5= PROGRAMMABLE MICROWAVE BI-LEVEL  
OPT-CLR-85= COLOR PAINT  
OPT-LW360-PC-B = PHOTOCELL 120-277V  
WEC-7RC = OPTIONAL REMOTE

## ACCESSORY:



LW360-SH1  
SHOWN WITH EM BOX  
(CAN BE PAINTED)

## FACTORY-INSTALLED OPTIONS:



OPT-EM-LW360  
SHOWN WITH MOTION SENSOR



OPT-SEN-LW360-3MRLV-5



WEC-7RC



OPT-LW360-PC-B



OPT-CLR-85

## Example:

- LW360-25W-30K-WH (FOR LW360 25W 3000K FIXTURE 120-277V)
- LW360-25W-30K-WH LW360-SH1 (FOR LW360 25W 3000K FIXTURE 120-277V) (SHROUD FOR LW360 SERIES)
- LW360-25W-30K-WH LW360-SH1 OPT-EM-LW360 (FOR LW360 25W 3000K FIXTURE 120-277V) (SHROUD FOR LW360 SERIES) (EMERGENCY BACKUP BATTERY, BACK BOX)

